

CHOIR

Roma | Canmore



A Design Studio.

Roma - Textured Clear Glass

Born from the interplay of science and lyricism, Choir harmonises innovation with atmosphere. This world-first portable lamp sings with pure lighting technology, integrating Casambi Bluetooth control into architectural systems with elegant precision. From candlelight warmth to full brilliance, its tunable spectrum and dimmable range invite nuance.

“Whether you are using one or one hundred fittings, I invite you to stand with our choir and sing.” - Alex Fitzpatrick





Roma - Textured Clear Glass



Canmore - Crackle Clear Glass

Canmore - Crackle Tea Fade Glass
Roma - Textured Clear Glass
Canmore - Crackle Clear Glass





COMMERCIAL CHARGING PLATE

Designed for larger venues, the commercial charging plate charges six fittings simultaneously. Streamlining logistics and reducing downtime, it supports efficient rotation across hospitality, retail, and event spaces with elegant modularity.

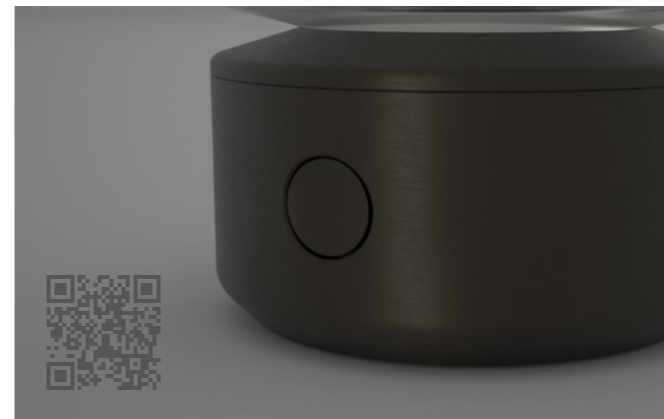
CONCEALED SECURITY THREAD

A discreet internal thread secures the lamp to surfaces, protecting against theft and movement. This subtle feature adds confidence in public settings and offers stability in outdoor or breezy environments.

VERSATILE IP RATING

Engineered with a robust IP rating, the lamp transitions seamlessly between indoors and out, ideal for alfresco dining, poolside lounging, or a soft glow beside the bath.

Charging Plate Contacts and Fixing Point

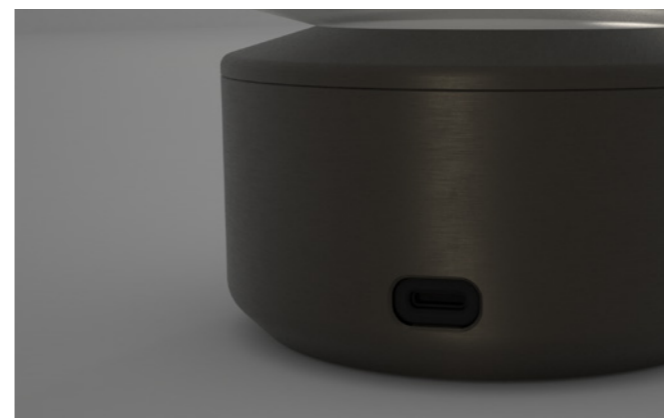


Step Dimming Button

LOCAL DIMMING AND CASAMBI CONTROL

This portable table lamp combines Casambi Bluetooth technology with a built-in step dimmer, offering dual modes of control.

Users can wirelessly adjust brightness, create scenes, and manage groups via the Casambi app, or dim locally using the tactile step dimmer, ideal for intuitive access across varied environments. For full setup and functionality, scan the QR code to visit casambi.com.



USB-C Connection

USB-C FAST CHARGE

Fast local charging via USB-C—no plate required. Quick, efficient power delivery for versatile portability.



Roma - Textured Clear Glass

TUNABLE LED - DAY TO NIGHT

This luminaire offers tunable white light ranging from 1800K candlelight to 3500K warm white, delivering tailored ambience across varied settings. At 1800K, the fitting evokes intimate glow reminiscent of flame—ideal for dining, lounging, or spa-like interiors. Shift to 3500K for a crisper daylight tone suited to productivity, retail, or gallery environments. Controlled via Casambi, the temperature adjustment enables responsive lighting that complements architecture and mood.

BATTERY [Li-ion]

Designed for portability and long-lasting illumination, the lamp offers up to 14 hours of continuous use at 90% brightness. High mode (90%) delivers approx. 180 lumens for 13 hours; Medium (75%) runs for 16 hours; Low (45%) extends to 25 hours; and L-Low (25%) offers an impressive 48-hour runtime. Note: Light output and run time may vary depending on lighting configuration.

Lithium-ion batteries deliver efficient, rechargeable power with minimal memory effect—ideal for portable lighting due to their long cycle life, compact form factor, and reliable performance.



Canmore - Crackle Clear GLass



Roma - Textured Clear Glass

GROUP LUMINAIRES WITH CASAMBI CONTROL

Casambi Bluetooth enables seamless group control of multiple fittings within a wireless mesh network. Users can synchronise brightness, scenes, and schedules across luminaires via the Casambi app.

ROMA

METAL FINISH
Brushed Bronze PVD

GLASS FINISH
Hand Blown Textured Clear

SPECIFICATION
Source: x24 LED
Power: 3.5W
Output: Ambient
Colour Temperature: 1800K to 3500K [2500K Default]
Colour Rendering Index: CRI90+ 2-step Binning

CONTROL
Switch - High 90% [Default] / Medium 75% / Low 45% /
L-Low 25%
Casambi Bluetooth - CBM003_C

BATTERY
Lithium Ion.

INGRESS PROTECTION
IP65

WEIGHT
1.2 KG

DIMENSIONS
92mm Diameter x 240mm H

CHARGING
USB-C PD 3.0 Charging Cable (12V FAST CHARGE)
Target charging time: 0-100% 2.4 hours (80% 2 hours)
NOT SUPPLIED

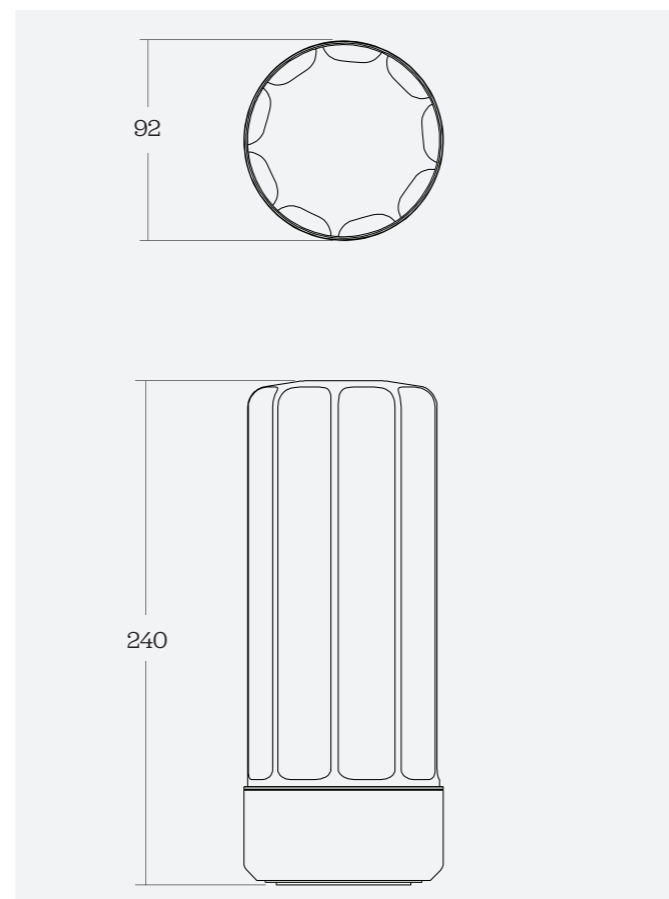
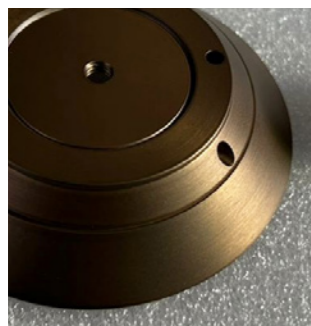
-6 Gang Charging Tray with a Wall Plug
Target charging time: 0-100% 3.5 hours (80% 2 hours)
SUPPLIED SEPARATELY

HAND BLOWN GLASS
Each piece is individually hand-blown and formed;
natural variations are expected and reflect the
character of the glass.

GLASS FINISH
-Textured Clear Glass



METAL FINISH
-Brushed Bronze PVD



CANMORE

METAL FINISH
Brushed Bronze PVD

GLASS FINISH
Hand Blown Crackle Clear / Crackle Tea Fade.

SPECIFICATION
Source: x24 LED
Power: 3.5W
Output: Ambient
Colour Temperature: 1800K to 3500K [2500K Default]
Colour Rendering Index: CRI90+ 2-step Binning

CONTROL
Switch - High 90% [Default] / Medium 75% / Low 45% /
L-Low 25%
Casambi Bluetooth - CBM003_C

BATTERY
Lithium Ion.

INGRESS PROTECTION
IP65

WEIGHT
1.2 KG

DIMENSIONS
92mm Diameter x 200mm H

CHARGING
USB-C PD 3.0 Charging Cable (12V FAST CHARGE)
Target charging time: 0-100% 2.4 hours (80% 2 hours)
NOT SUPPLIED

-6 Gang Charging Tray with a Wall Plug
Target charging time: 0-100% 3.5 hours (80% 2 hours)
SUPPLIED SEPARATELY

HAND BLOWN GLASS
Each piece is individually hand-blown and formed;
natural variations are expected and reflect the
character of the glass.

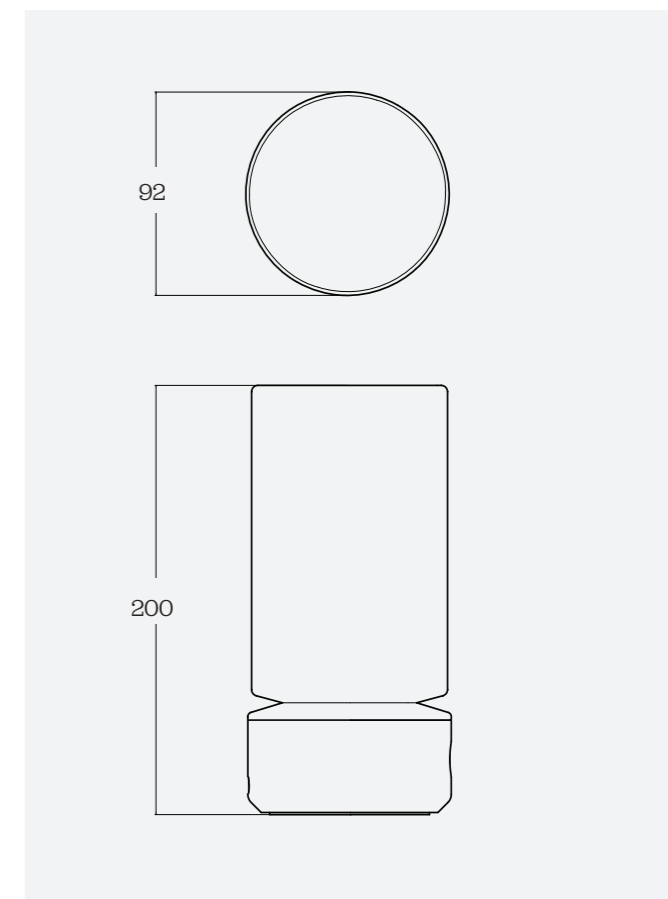
GLASS FINISH
-Crackle Clear Glass



-Crackle Tea Fade Glass



METAL FINISH
-Brushed Bronze PVD





Alex Fitzpatrick is the founder of ADesignStudio, an Australian lighting practice known for its sculptural approach to illumination. Based in Sydney, Fitzpatrick combines architectural rigour with a deep sensitivity to materials—crafting sophisticated luminaires that fuse technical excellence with the natural beauty of stone, glass, metal, and LED. His work reflects an ongoing commitment to innovation, artisanal craftsmanship, and spatial harmony.





ADesignStudio.

SYDNEY, AUSTRALIA