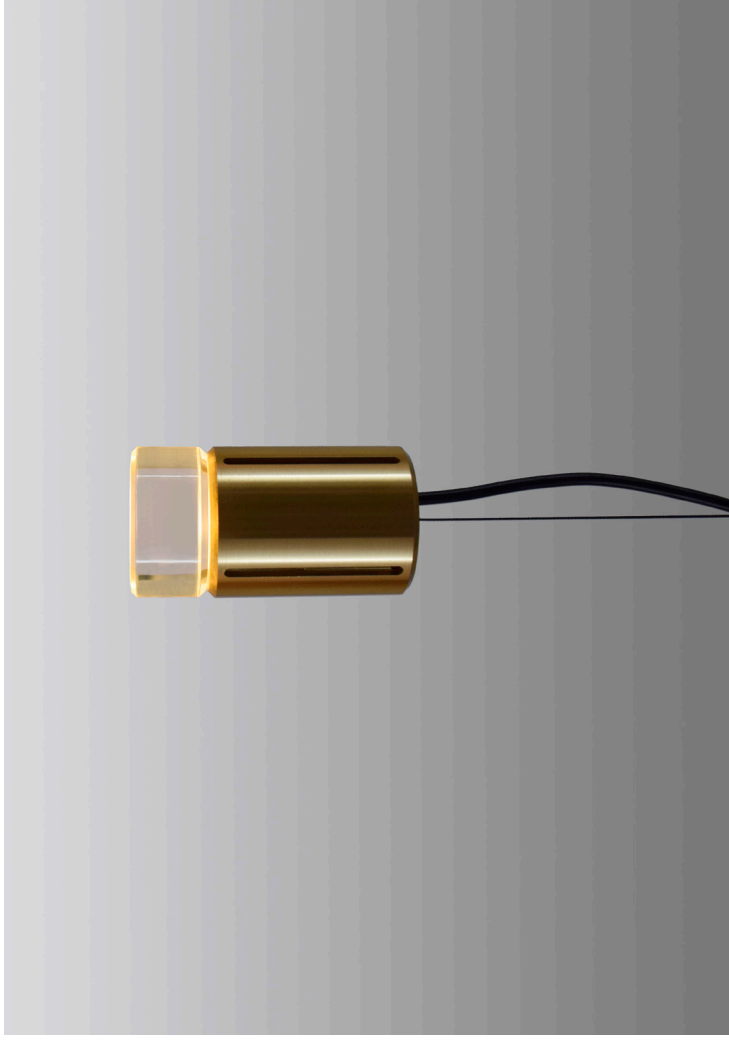
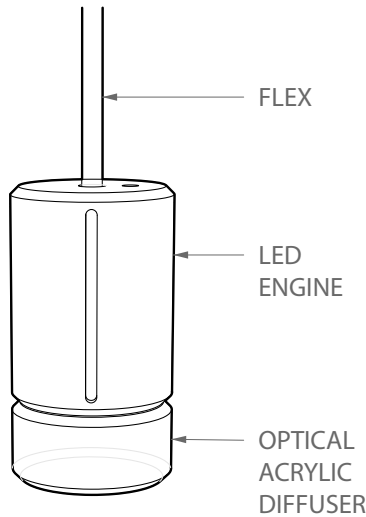


# ADesignStudio.

## **GREENWAY A1** INSTALLATION NOTES



Sydney, Australia  
[studio@adesignstudio.com.au](mailto:studio@adesignstudio.com.au)



## ATTENTION!

The safety of this fitting can only be guaranteed if these instructions are observed, during both installation and use. Please retain these instructions.

## REMARKS

- When installing the system, make sure all current national regulations relating to installation are observed.
- When installing and / or working on the fitting, ensure that the power supply has been switched off.
- The fitting may in no way be modified or tampered with. Any modification may compromise safety, causing the appliance to become dangerous. ADesignStudio declines all responsibility for products that are modified.
- This appliance must be connected to an efficient grounding system in order to work safely and correctly.
- Contact a qualified electrician for installation.

## ASSEMBLY INSTRUCTIONS

Caution: to avoid possible electrical shock, make certain electricity is shut off at main panel before wiring.

1. Remove magnetically attached Cosmetic Plate taking care not to damage surrounding lip
2. Undo three screws and remove Tool Plate
3. Fix Canopy Shell to ceiling through 5mm slots (fasteners not included)
4. Make the electrical connections respecting the poles. For exterior installations wire connections are to be IP rated (water tight).
5. Connect mains power supply and earth connection to the terminal block
6. Connect Flex into Terminal Block
7. Reinstall Tool plate and Cosmetic Plate

## CLEANING INSTRUCTIONS

Warning: Do not use alcohol or other solvents. Use only a soft cloth to clean the appliance.